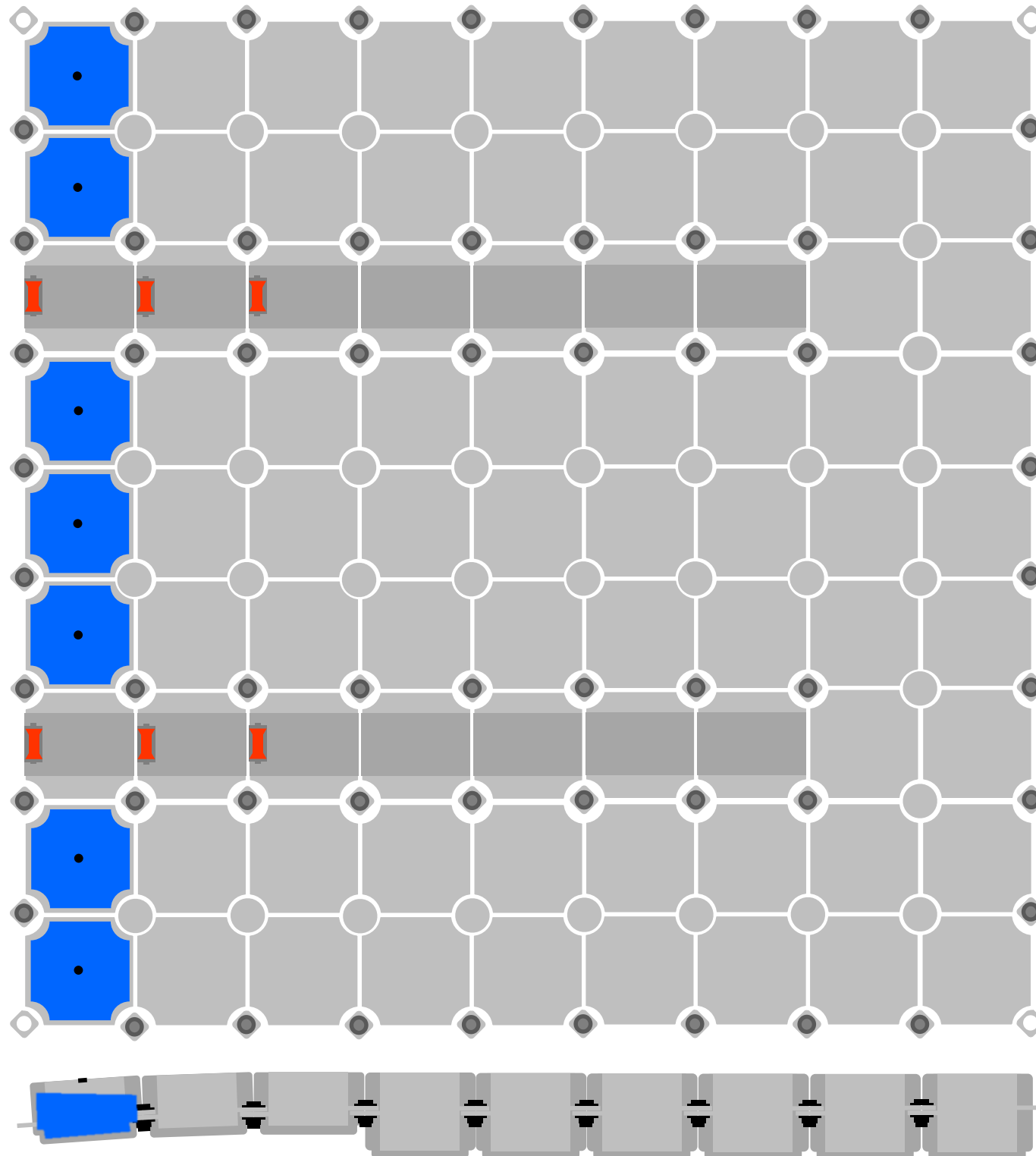


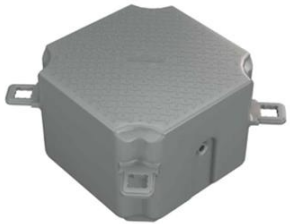
Jet Slider Twin 450_Mounting Guide

Thank you for purchasing a BulDock Jet Slider Twin 450!
This guide will show how to assemble, step by step.



Side view:

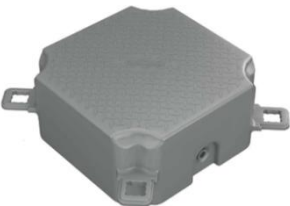
46x



8x



21x



6x



36x



60x



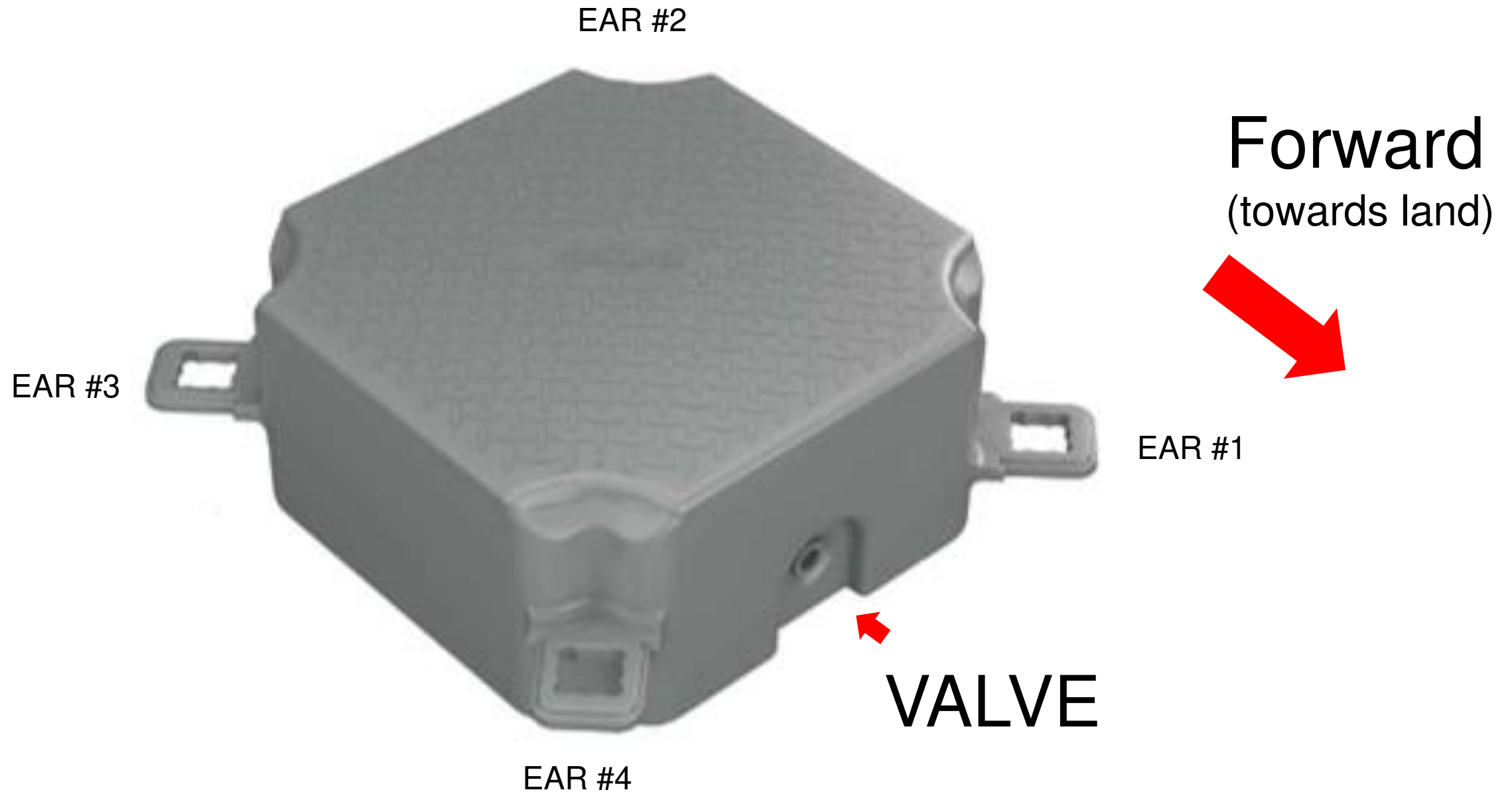
16x



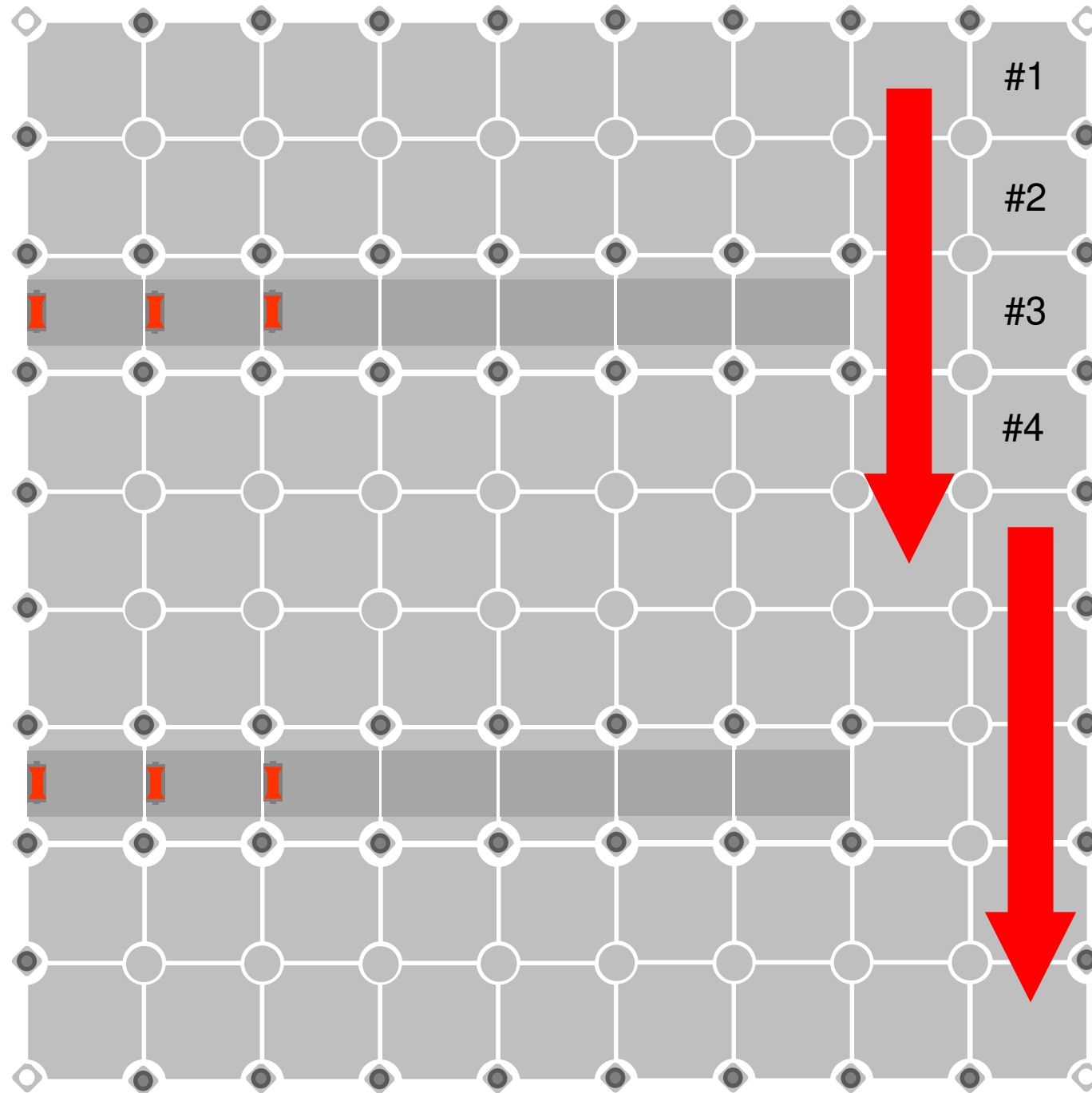
7x



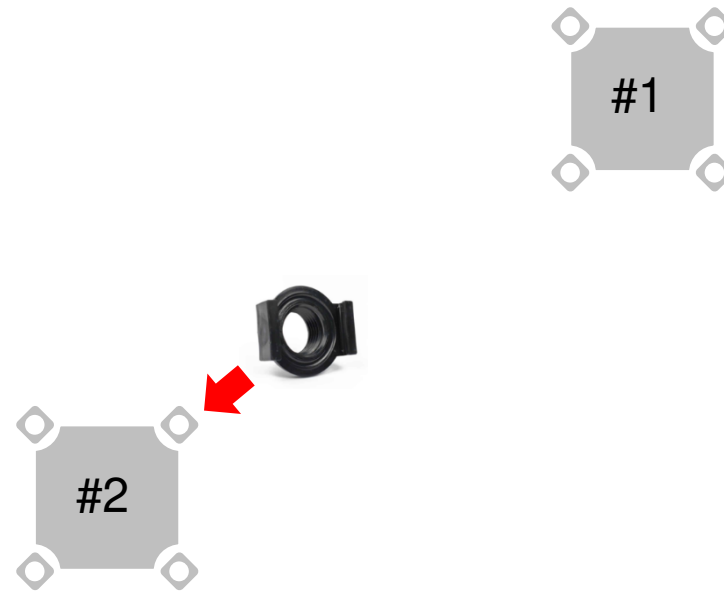
Valves are always pointing forward! Towards land!



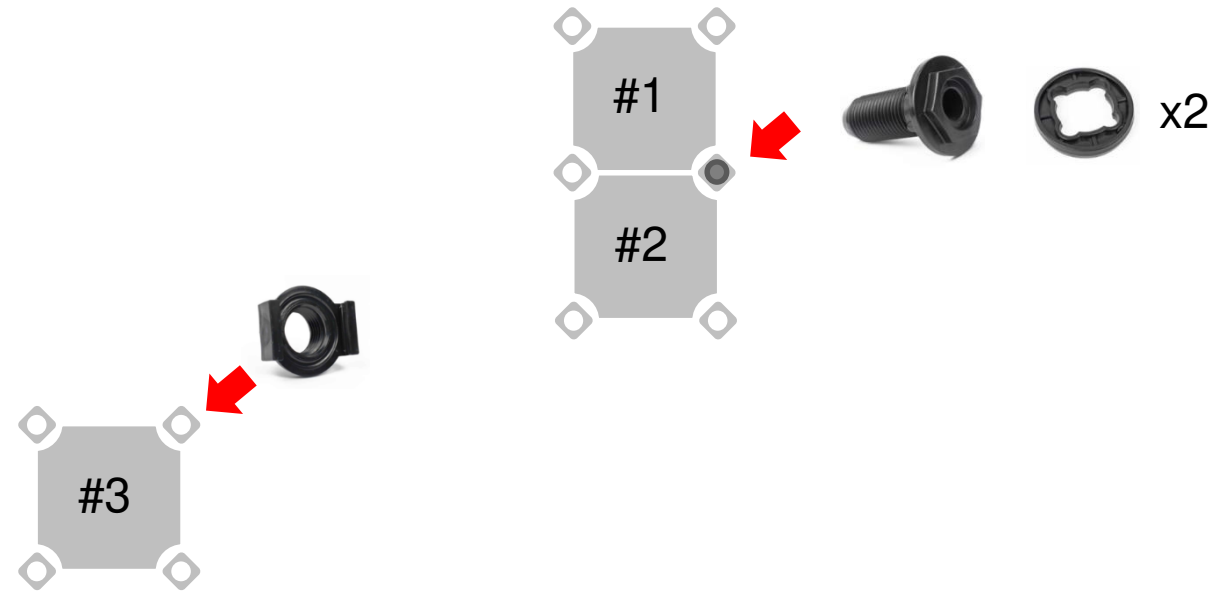
It is easiest to assemble the Jet Slider on flat surface nearby the water. Add the cubes in the order of the numbers.



Start with the first cube in the front left corner. Add a sliding nut to ear #1 of the second cube.



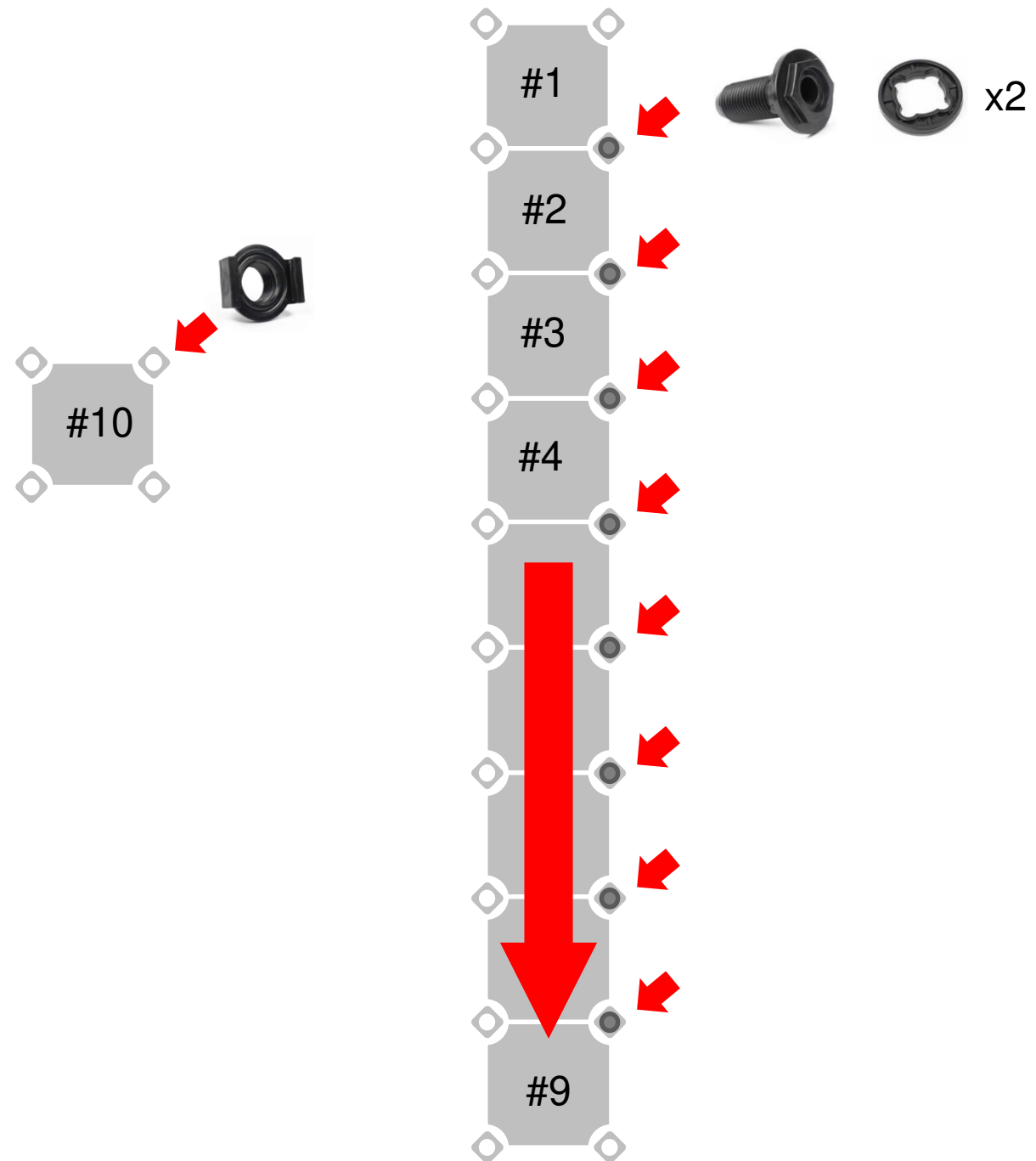
Connect the second cube with the first using a lug connector and two spacers. Then add a sliding nut to ear #1 of the third cube.



⚠ IMPORTANT NOTICE

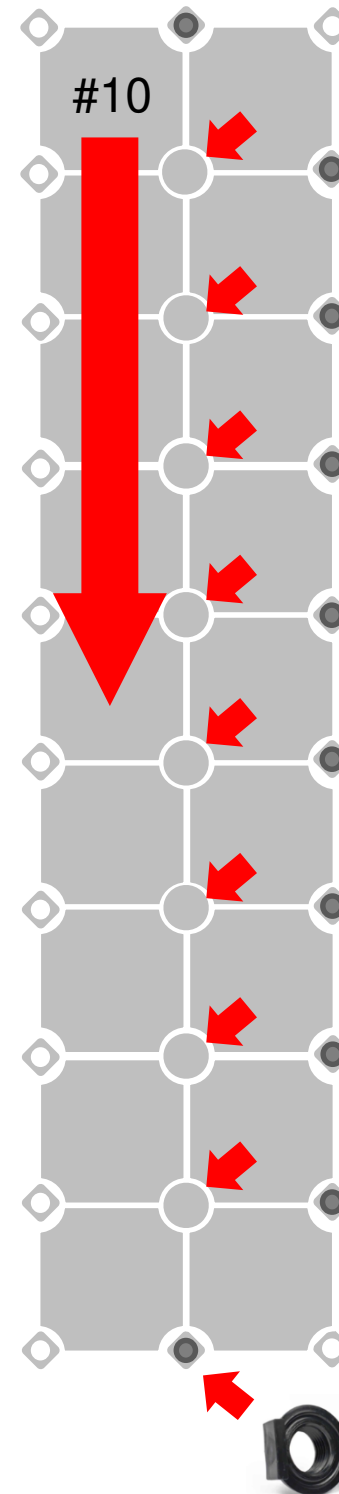
When installing Lug Connectors, do not overtighten it once you have reached the point of full turning.
After, unscrew by 1/4 in the opposite direction.

Repeat with all 9 cubes in the first row. Then add a sliding nut to ear #1 of the cube #10.

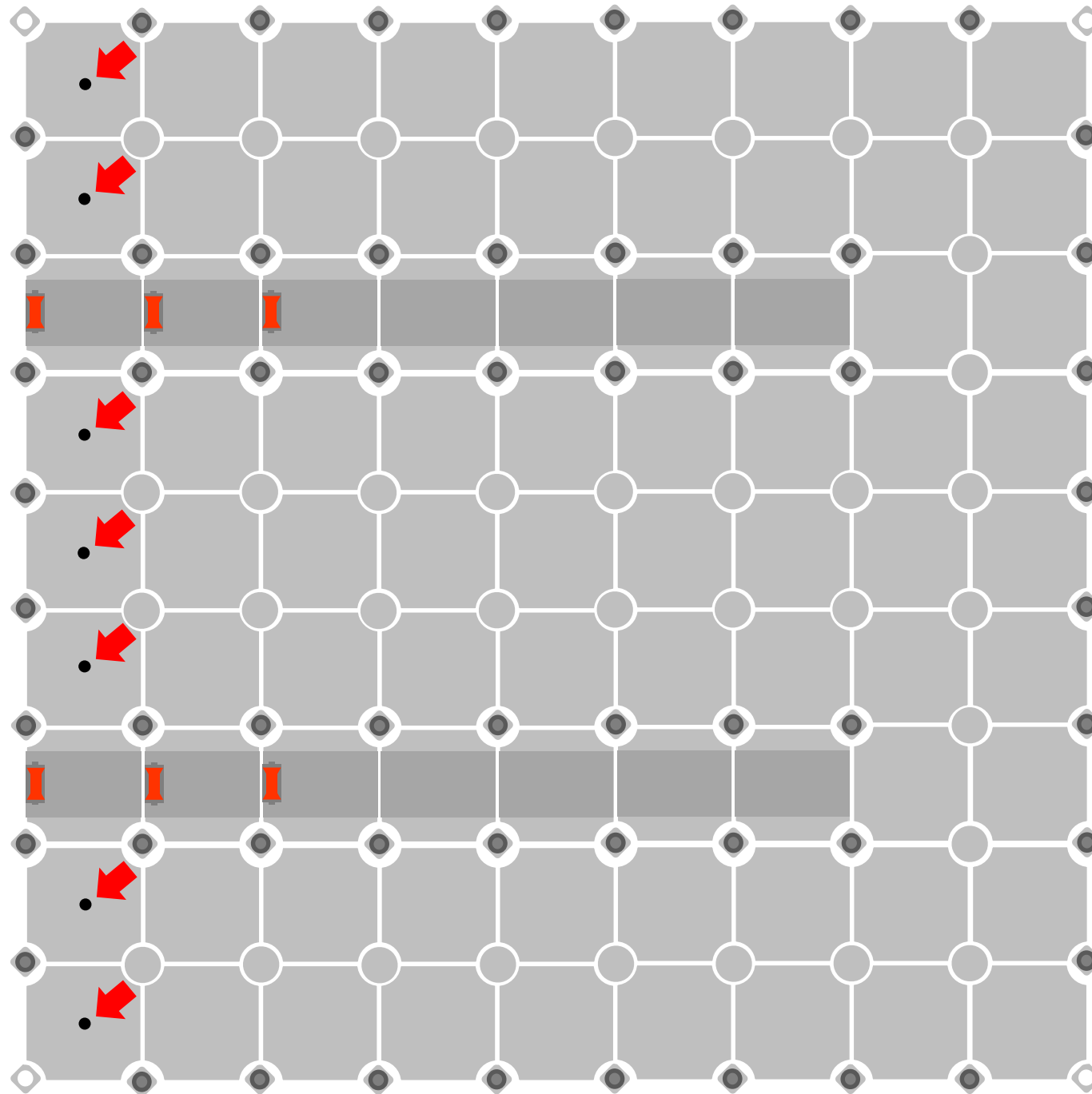


Proceed the same way with all cubes in the second row but please note the following:

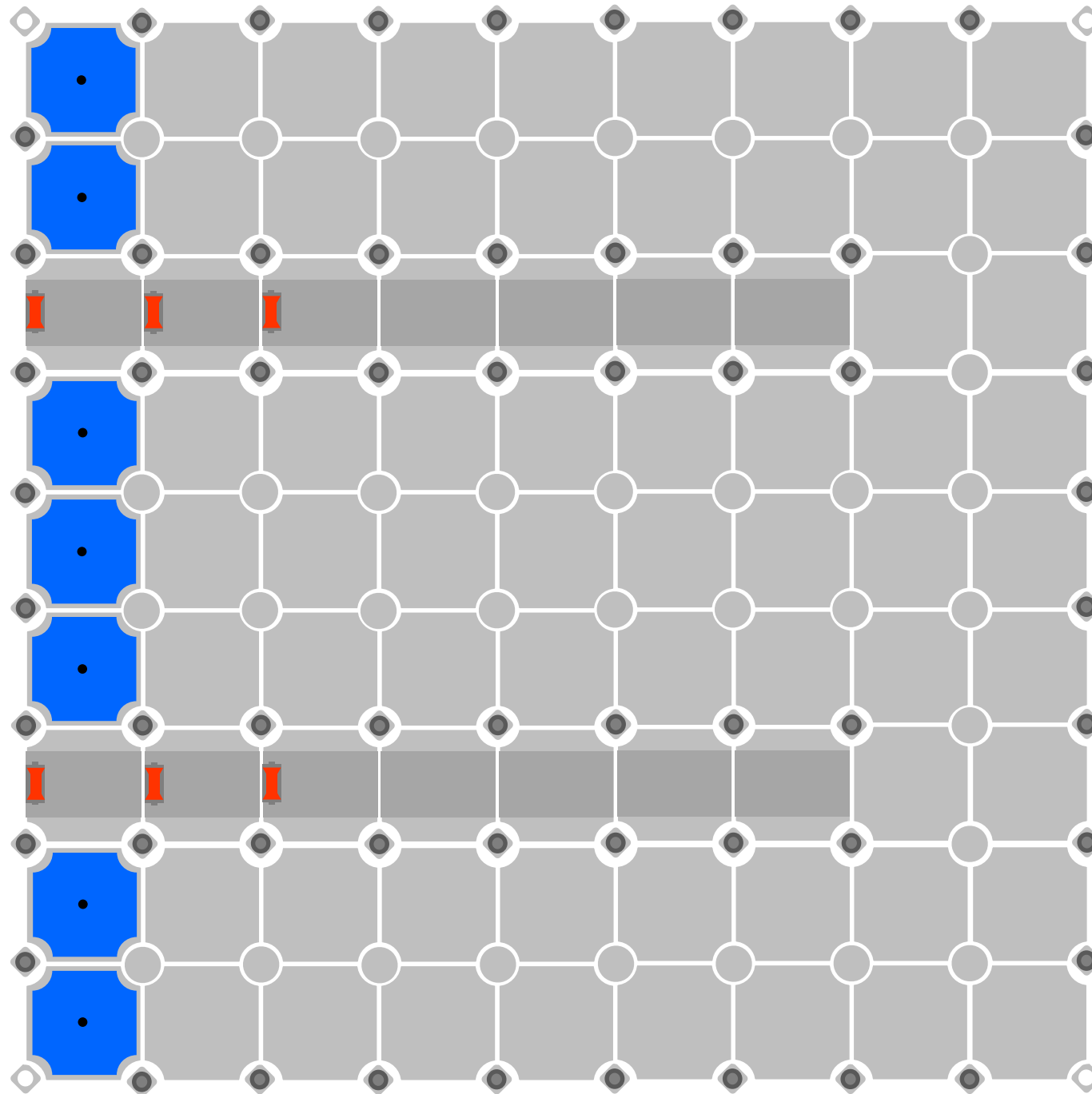
1. No spacers needed!
2. Use the big Pin screws on some locations.
3. The sliding nut is installed on ear #3.



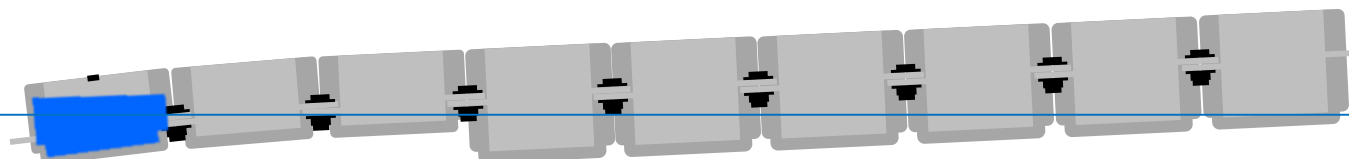
When the whole Jet Slider Twin is assembled please drill holes for the ballast water in the rear cubes.



Finally launch the Jet Slider into the water and then fill up the rear cubes to get a perfect angle for docking smoothly. The level of ballast water can vary for different types of PWCs. Have fun in the sun!



Side view:



Water surface